



Fire Products & Solutions

Product Selector



Smoke, Heat & Carbon
Monoxide Detection

Innovation | Quality | Performance

Why Choose Brooks alarms?

Innovation | Quality | Performance

- ✓ Brooks is a 100% Australian owned company and are specialists in smoke, heat and carbon monoxide protection
- ✓ Each alarm is tested multiple times before leaving the factory – no batch testing
- ✓ European designed and manufactured
- ✓ All alarms are approved to Australian, British or European standards



Easi-fit bases for quick, reliable installation



RadioLINK[®]

wireless interconnection technology



AudioLINK[®]

data extraction technology



RadioLINK+

wireless interconnection with complete system data extraction and monitoring



SmartLINK[®]

RF wireless interconnection and data extraction

Contents

Mains Powered Alarms - 3000 Series	2-6
Mains Powered Alarms - 160e Series	7
Mains Powered Alarms - 140RC Series	8
Battery Smoke & Heat Alarms - 600 Series	9-10
Carbon Monoxide Alarms	11
Alarm Control	12
Deaf and Hard of Hearing	13
Alarm Technologies	14-17
Product List	18-19
Troubleshooting	20
Approved Installer Training	21

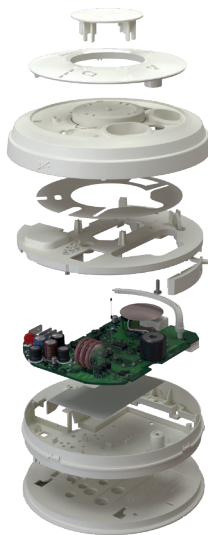


Smoke / Heat & CO Alarms - 3000 Series

The **3000** Series
is our most **intelligent** series yet,
whilst maintaining the **simplicity** our
customers value.

The new **3000** Series provides complete property coverage from one series. This technologically advanced series detects both Fire and Carbon Monoxide (CO), ensuring your whole property is protected.

It's vital to protect against both risks. Previously, the answer to this would have been to fit two alarms, a Heat Alarm and a CO Alarm, however this protection can now easily be achieved by using the new EIB3028 Dual-Sensor which detects both Fire and Carbon Monoxide in a single alarm.



Simplicity for every install



Specify a whole property from one series



Easi-fit bases; one base fits all



Quick and reliable interconnection



Backwards compatibility

Intelligence in every alarm

Intelligent sensors for full circle Fire & CO protection



SmartLINK
wireless
interconnection



AudioLINK
data extraction

Mains Powered Smoke / Heat & CO Alarms

Meet the **3000** Series



Photoelectric Alarm

EIB3016

Best for slow, smouldering fires. Built-in dust compensation

Multi-Sensor Alarm - Photoelectric & Heat

EIB3024

Widest fire response for all living areas except kitchens

Heat Alarm

EIB3014

Best for detecting heat build-up from large flaming fires

Multi-Sensor Alarm - Heat & Carbon Monoxide

EIB3028

Best for kitchens - Fire & Carbon Monoxide coverage

Carbon Monoxide Alarm

EIB3018

Best for areas that contain a fuel burning appliance

Add SmartLINK

SmartLINK Module

EIB3000MRF

Allows for wireless interconnection and data extraction

Multi-Sensor Heat & CO Alarm - 3000 Series



Contains both a Heat and Electrochemical CO sensor – Heat and CO coverage in one alarm

- Mains powered with 10-year rechargeable lithium battery back-up
- Compatible with SmartLINK® interconnection
- AudioLINK® data extraction technology
- Heat or CO indicator on alarm head
- Communicates with other RadioLINK+® devices



Kitchen



Heat: AS1603.3:2018



CO: KM 86596

EN 50291-1: 2010 +A1: 2012

Multi-Sensor Alarm

EIB3028

Add SmartLINK

SmartLINK Module

EIB3000MRF

Multi-Sensor Photoelectric & Heat Alarm - 3000 Series



Contains both a Photoelectric and Heat sensor for total fire response

- Mains powered with 10-year rechargeable lithium battery back-up
- Compatible with SmartLINK® interconnection
- AudioLINK® data extraction technology
- Dust compensation – unique self-monitoring mechanism
- Communicates with other RadioLINK+® devices



Hallway



Landing



Living Room



Dining Room



Bedroom



Photoelectric: AS3786:2014 +A1:2015 +A2:2018

Heat: AS1603.3:2018

Multi-Sensor Alarm

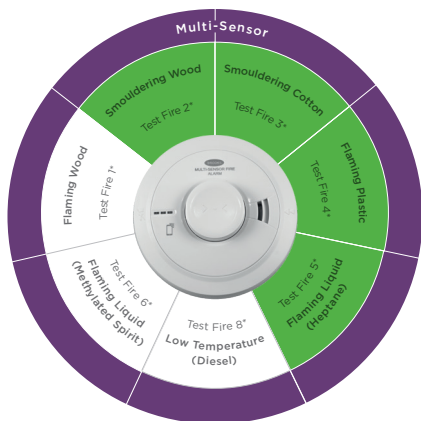
EIB3024

Add SmartLINK

SmartLINK Module

EIB3000MRF

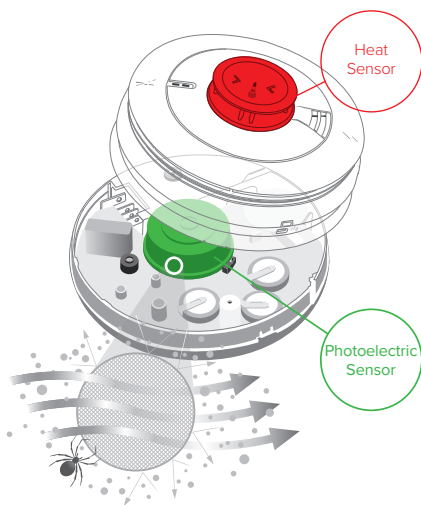
Multi-Sensor Alarm



Test Fire Response

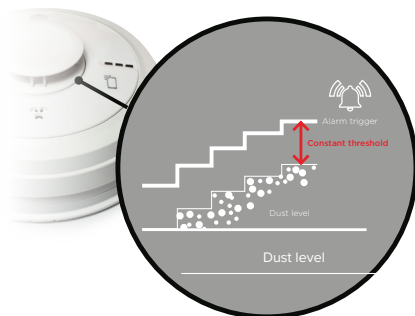
The combined heat and smoke sensors are able to detect all test fire types for total fire response. The green sections show the test fires passed by photoelectric alarms and heat alarms to meet with the domestic Australian, British & European Standards.

The Multi-Sensor alarm passes all these green sectioned test fires, plus three extra test fires.



Dual Sensors

Intelligent software and improved sensor design combine for a reduction in false alarms.



Intelligent Design

Dust compensation – the alarm automatically recalibrates the alarm trigger point to compensate for dust.

3000 Series - Single Sensors

Intelligent Simplicity



- Mains powered with 10-year rechargeable lithium battery back-up
- **AudioLINK**® data extraction technology built-in
- **SmartLINK**® wireless interconnection
- **easi-fit** base
- 10-year life
- Unique dust compensation mechanism in the photoelectric alarm to reduce false alarms



Photoelectric: AS3786:2014 +A1:2015 +A2:2018
Heat: AS1603.3:2018



CO: KM 86596
EN50291-1:2010 +A1:2012

Photoelectric



Hallway



Landing



Living Room



Dining Room



Bedroom

Heat



Garage



Kitchen

Photoelectric Alarm

EIB3016

Best for slow, smouldering fires. Built-in dust compensation

Heat Alarm

EIB3014

Best for detecting heat build-up from large flaming fires

Mains Powered CO Alarm

EIB3018

Best for areas that contain a fuel burning appliance

Add SmartLINK

SmartLINK Module

EIB3000MRF

Smoke & Heat Alarms - 160 eSeries

The next step in alarm **e**volution



- Mains powered with 10-year rechargeable lithium battery back-up
- **easi-fit** base
- 10-year life
- Compatible with **RadioLINK+** interconnection
- Communicates with **SmartLINK** devices



Photoelectric: AS3786:2014 +A1:2015
Ionisation: AS3786:2014 +A1:2015

Photoelectric



Hallway



Landing



Living Room



Dining Room



Bedroom

Ionisation



Garage



Laundry

Photoelectric Alarm

EIB166e

Best for slow, smouldering fires

Ionisation Alarm

EIB161e

Best for fast flaming fires

Add RadioLINK+

RadioLINK+ Module

EIB100MRF



SERIES

Smoke & Heat Alarms - 140RC Series



- Mains powered with 9V alkaline battery back-up
- **easi-fit** base
- 10-year life
- Compatible with **RadioLINK**[®] interconnection
- Communicates with **SmartLINK**[®] devices



Photoelectric: AS3786:2014 +A1:2015
 Ionisation: AS3786:2014 +A1:2015
 Heat: AS1603.3:2018

Photoelectric



Hallway



Landing



Living Room



Dining Room



Bedroom

Heat



Garage



Kitchen

Ionisation



Garage



Laundry

Photoelectric Alarm

EIB146RC

Best for slow, smouldering fires

Heat Alarm

EIB144RC

Best for detecting heat build-up from large flaming fires

Ionisation Alarm

EIB141RC

Best for fast flaming fires


Add RadioLINK

RadioLINK Base

EIB168RC

Battery Powered 10-Year Smoke and Heat Alarms



- Battery powered by a sealed in lithium battery
- Easy to fit, twist-on base and multi-fixings
- 10-year life
- Communicates with  **RadioLINK⁺** devices



Photoelectric: AS3786:2014
Heat: AS1603.3:2018

Photoelectric



Hallway



Landing



Living Room



Dining Room



Bedroom

Heat



Garage



Kitchen

Battery Photoelectric Alarm with AudioLINK

EIB650iC

Battery Photoelectric Alarm with RadioLINK⁺ and AudioLINK
wireless interconnection and dust compensation

EIB650iRF

Best for slow, smouldering fires

Battery Heat Alarm

EIB603TYC

Battery Heat Alarm with RadioLINK⁺
wireless interconnection

EIB603TYCRF

Best for detecting heat build-up from large flaming fires


Add RadioLINK⁺ separately

RadioLINK⁺ module

EIB600MRF

Battery Powered 9V Smoke and Heat Alarms



- Battery powered by a 9V alkaline battery
- Easy to fit, twist-on base and multi-fixings
- Communicates with  **RadioLINK⁺** devices



Photoelectric: AS3786:2014
+A1:2015
Heat: AS1603.3:2018

Photoelectric



Hallway



Landing



Living Room



Dining Room



Bedroom

Heat



Garage



Kitchen

Battery Photoelectric Alarm

EIB605C

Battery Photoelectric Alarm with RadioLINK⁺
wireless interconnection

EIB605CRF

Best for slow, smouldering fires

Battery Heat Alarm

EIB603C

Battery Heat Alarm with RadioLINK⁺
wireless interconnection

EIB603CRF

Best for detecting heat build-up from large flaming fires

Add RadioLINK⁺ separately



RadioLINK⁺ module

EIB605MRF

Mains Powered Carbon Monoxide Alarms

Carbon Monoxide (CO) is a silent killer.
You can't see it, smell it or taste it.



- Mains powered with 10-year rechargeable lithium battery back-up
- Built in  **AudioLINK**[®] data extraction technology
- 10-year life
- Proven electrochemical sensor
-  **SmartLINK**[®] compatible
- Communicates with  **RadioLINK**⁺ devices



KM 86596
EN50291-1:2010 +A1:2012



Mains Powered CO Alarm



EiB3018

SmartLINK Module

EiB3000MRF

Battery Powered Carbon Monoxide Alarms



- Battery powered by a sealed in lithium battery
- Built in  **AudioLINK**[®] data extraction technology
- 10-year life
- Easy to fit, twist-on base and multi-fixings
- Proven electrochemical sensor
-  **RadioLINK**⁺ compatible



KM 86596
EN 50291-1:2010+A1:2012
EN 50291-2:2010

Battery CO Alarm

Ei208W

(upgradeable to RadioLINK+ with Ei200MRF module)

RadioLINK+ module for Ei208W CO alarms

Ei200MRF

Alarm Control

One button –
three functions



- Battery powered by a sealed in lithium battery
- 10-year life
- Completely wire free installation
- Uses **RadioLINK+** wireless technology to interconnect to the rest of the system
- LED display to show Fire or Carbon Monoxide alarm activation
- Memory function



Test
all the alarms



Locate
the triggered alarm



Silence
silence active alarm



- Remote Control Switch for remote Locate, Test and Silence

Wall Mount Alarm Controller RadioLINK+ - wireless 10-year lithium battery	EIB450
Wall Mount Alarm Controller RadioLINK - wireless 10-year lithium battery	EIB411RF
Alarm Controller - hardwired	BAATLS
Alarm Locator Switch - hardwired	BAALOC

Call Points



- Allows for remote triggering of an alarm system
- Non-breaking, resettable front plates

RadioLINK Manual Call Point

EIB407RF

Deaf & Hard of Hearing



Smoke alarms save lives but those who are deaf or hard of hearing cannot depend on the sound of the regular alarm to alert them to a fire. Brooks has solutions specifically designed for the deaf and hard of hearing.

- Integral high intensity strobe
- Plug-in vibration pad
- Auxiliary sockets for additional strobes or vibration pads
- Plug-pack for ease of installation
- Built-in rechargeable battery back-up
- Low battery warning
- Power on indicator
- Fault indicator



Mains Powered RadioLINK Alarm Kit for the Deaf & Hard of Hearing (Contains strobe light and pillow pad)	EIB170RFAU
Mains Powered RadioLINK Strobe Light	EIB171RFAU
Vibration Pad – Additional (plugs into strobe light)	EIB174

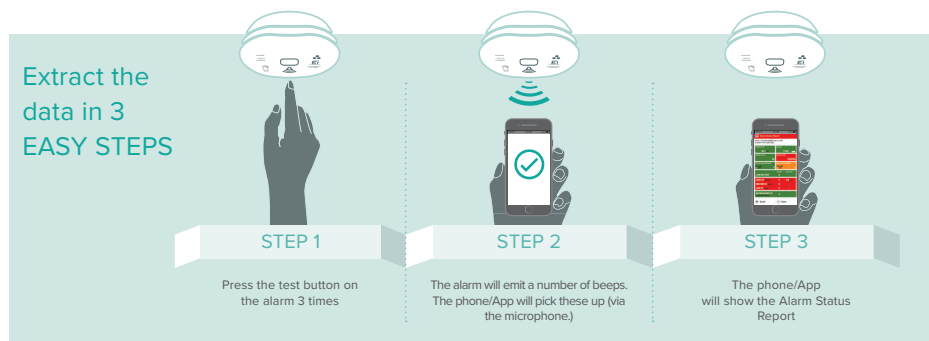
Technology



Award winning AudioLINK technology makes it easy to get real time data from alarms – saving lives, money and time.

All you need is an AudioLINK enabled alarm, a smartphone or tablet and the free AudioLINK app.

Available from:

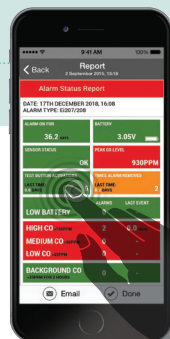


The Alarm Status Report

- ✓ Alarm activations
- ✓ Sensor status
- ✓ Record of testing
- ✓ Carbon Monoxide (CO) levels from CO alarms
- ✓ Background CO levels from CO alarms
- ✓ Advice on dust levels from smoke-type alarms
- ✓ Plus all this information can be emailed directly from a phone or tablet

Updates to the AudioLINK App

- ✓ Group reports available by address
- ✓ Reports available as PDF or .csv file
- ✓ Alarm barcode scanning





The next generation of Radio Frequency Wireless Interconnection

With the introduction of the 3000 Series we have also advanced our award-winning Radio Frequency (RF) Wireless Interconnection.

We've made it smarter, easier and future-proof. We've taken our renowned RadioLINK+ technology and added a new range of functions and features.

Wireless Interconnection

The new SmartLINK technology still provides the same proven wireless interconnection technology as RadioLINK and RadioLINK+, using Radio Frequency signals and is completely compatible with both existing systems.

- | | |
|--|--|
| ✓ No need for tricky cable runs, alarms interconnect using radio frequency signals | ✓ Expand existing systems easily by adding in SmartLINK technology |
| ✓ When one alarm is triggered, all others sound for increased audibility throughout the property | ✓ Achieve remote complete system data monitoring and extraction |

To add SmartLINK technology to your system, simply plug SmartLINK modules into any 3000 Series alarm head.



Technology

RadioLINK® Interconnection

RadioLINK & RadioLINK+ use Radio Frequency for wireless interconnection making installation quicker and easier.

- Eliminates tricky wiring runs
- Saves time and disruption
- Makes it easier to add in new alarms and accessories



 **RadioLINK®** Base

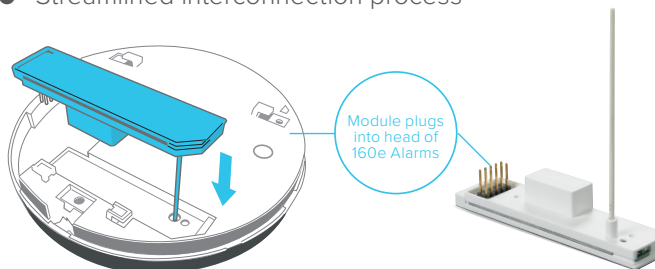
EIB168RC

Get more with

RadioLINK+®

Interconnection technology, but with new functionality, including data extraction and monitoring.

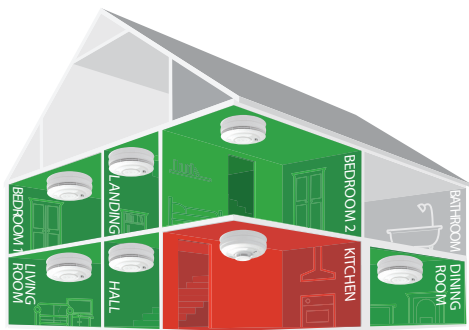
- Alarm system data extraction
- System monitoring to recognise alarm removal or tampering
- Streamlined interconnection process



 **RadioLINK+®** Module

EIB100MRF

What alarm types go where?

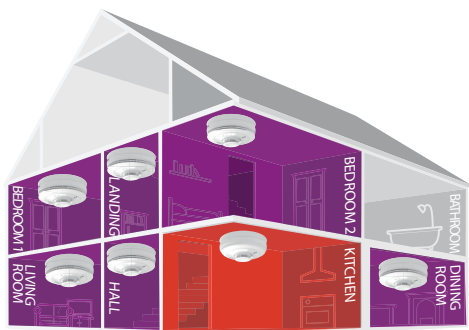


WHY Photoelectric

- Best for detecting slow, smouldering fires reducing the number of nuisance alarms.
- Fewer nuisance alarms means less call outs for installers.

WHY Heat

- Reacts to heat and is resistant to kitchen fumes such as burnt toast.
- Fit a heat alarm in a kitchen as other sensor types are more likely to nuisance alarm.



WHY Multi-Sensor

- Optimum protection due to best fire response for all fire types – using heat and photoelectric sensors.
- Fewer nuisance alarms means less call outs for installers.

- **Multi-Sensor** or photoelectric smoke alarms should be used in living rooms, circulation areas and escape routes. **Heat** alarms should be used in kitchen areas. Photoelectric alarms should be used in bedrooms (all interconnected, mains powered and battery backed).
- Where living rooms / kitchens are contained within one single compartment, **heat** alarms should protect the cooking area, and **multi-sensor** or photoelectric smoke alarms should protect the living area.

Product List

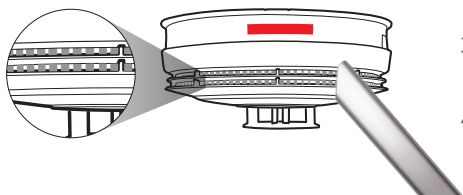
Product Ref.	Item Description	Page No.
BA128	Surface Mount Relay Base 230V	
BAAISO	Alarm Isolator Switch	
BAALOC	Alarm Locator Switch	12
BAATLS	Alarm Controller	12
BAVISA240	Visalert Visual Warning Device 230V - 140RC/160e/3000 Series Alarms	
Ei200MRF	RadioLINK Wireless Module to suit CO Alarms	11
Ei208W	CO Alarm 10-year Lithium Battery + RadioLINK Optional	11
EIB100MRF	RadioLINK+ Module for use with 160e Alarm Series	7
EIB127	Surface Mount Base for 140RC/160e/3000 Series Alarms	
EIB128RBU	Surface Mount Relay Base Mains Powered with Battery Back-up	
EIB141RC	Ionisation Smoke Alarm Mains Powered with 9V Battery Back-up	8
EIB144RC	Heat Alarm Mains Powered with 9V Battery Back-up	8
EIB146RC	Photoelectric Smoke Alarm Mains Powered with 9V Battery Back-up	8
EIB161e	Ionisation Smoke Alarm Mains Powered with 10-year Battery Back-up	7
EIB164e	Heat Alarm Mains Powered with 10-year Battery Back-up	
EIB166e	Photoelectric Smoke Alarm Mains Powered with 10-year Battery Back-up	7
EIB168RC	RadioLINK RF Interconnection Base to suit 140RC Series	8
EIB170RFAU	RadioLINK Wireless Strobe & Patrice for Deaf and Hard of Hearing	13
EIB171RFAU	RadioLINK Wireless Strobe for Deaf and Hard of Hearing	13
EIB173P	Vibralarm 230V Strobe + Vibration Patrice	
EIB174	Vibration Patrice for the EIB173P & EIB170RFAU	13
EIB3000MRF	SmartLINK Module for 3000 Series Alarms	3
EIB3014	Heat Alarm Mains Powered with SmartLINK	6
EIB3016	Photoelectric Smoke Alarm Mains Powered with SmartLINK	6
EIB3018	Carbon Monoxide Alarm Mains Powered with SmartLINK	6
EIB3024	Multi-Sensor Photoelectric & Heat Alarm Mains Powered with SmartLINK	4
EIB3028	Multi-Sensor Heat & Carbon Monoxide Alarm Mains Powered with SmartLINK	4
EIB407RF	Wireless Manual Call Point 10-year Lithium Battery	12
EIB408RF	Wireless Switch Input Module 10-year Lithium Battery	
EIB408RFH	RadioLINK Remote Heat Switch 10-year Lithium Battery	
EIB411RF	Wall Mount Remote Control with Test/Locate/Hush - wireless 10-year Lithium Battery	12
EIB413	Interface Input Module for use with Security/Fire Panels	

Product List

Product Ref.	Item Description	Page No.
EIB420RF	Mains Powered Wireless Repeater Module	
EIB428RF	Mains Powered Wireless Relay Module	
EIB450	Wall Mount Controller - Test/Locate/Silence/Memory - wireless 10-year Lithium Battery	12
EIB600MRF	RadioLINK RF Module for 600/650 Series	9
EIB603C	Heat Alarm 9V with Interconnect	10
EIB603CRF	Heat Alarm 9V + RadioLINK RF Module	10
EIB603TYC	Heat Alarm 10-year Lithium Battery with Optional RadioLINK	9
EIB603TYCRF	Heat Alarm 10-year Lithium Battery + RadioLINK RF Module	9
EIB605C	9V Photoelectric Smoke Alarm with Interconnect	10
EIB605CRF	9V Photoelectric Smoke Alarm + RadioLINK RF Module	10
EIB605MRF	RadioLINK RF Module for 9V 600 Series	10
EIB650iC	Photoelectric Smoke Alarm 10-year Lithium Battery with Hardwired Interconnection with Optional RadioLINK RF Module	9
EIB650iRF	Photoelectric Smoke Alarm 10-year Lithium Battery with Hardwired Interconnection with RadioLINK RF Module	9
EIBPLATE	Isolator Base 4 Wire to suit 140RC/160e/3000 Series - BAAISO & BAATLS	
EIBUSB1	RadioLINK USB Dongle (including software)	
HS80	Roof Space Heat Detector 80°C	
HSROOFKIT	Roof Space Heat Switch Kit (1 x EIB408RFH, 2 x HS80, 20m cable)	

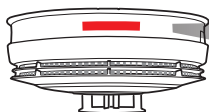
Troubleshooting

How to clean alarms?



1. Turn off mains power to the alarm
green light should go out
2. With the thin nozzle attachment, vacuum around the vents
3. Clean the cover using a damp cloth. Dry with a lint free cloth
4. Turn the mains power back on
– green light should be on

How old is the alarm?

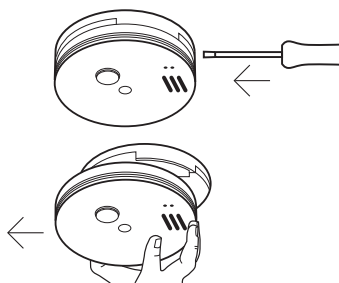


Look for the 'Replace By' label:

REPLACE BY Mar 2026
Model: EIB164E 18 W51

YEAR WEEK
18=2018 NUMBER
19=2019
20=2020
etc.

How to change the batteries in the 140RC?



1. Insert a flat headed screwdriver into the removal slot of the alarm
2. Slide the alarm off its base, replace the battery in the back of the alarm with either a Duracell MN 1604 or Eveready 522 battery. Finally slide the alarm back on its base

How often should alarms be tested?



Monthly

Press test button for 10sec. Alarm will sound loudly

APPROVED INSTALLER

Brooks Approved Installer training scheme is designed to provide electrical contractors with all the information they need to select and install domestic Smoke, Heat and Carbon Monoxide alarm systems.

What is covered?

- Australian Standards
- Building Code of Australia
- State regulations
- Smoke alarm sensor types
- Alarm models
- Features & benefits of each type of alarm
- Alarm interconnection
- Wireless connectivity and house coding
- Alarm data extraction
- Where to locate alarms
- What is AudioLINK?
- Alarms for the deaf and hearing impaired

How much does it cost?

Free

What is included?

Upon completion of the training you will receive:

- Sticker for Trade Vehicle
- Electrical Contractors Handbook
- Product Selector
- House Coding Tool/Pen

How can I sign up?

Contact your local Brooks rep





Fire Products & Solutions

Innovation | Quality | Performance

Brooks Australia
4 Pike Street
Rydalmere NSW 2116

1300 78 FIRE

info@brooks.com.au

www.brooks.com.au